



Theatre Locale – The Heavitree Squilometre Update

Welcome to the June/July 2016 issue of *Theatre Locale*, the newsletter for [Interwoven Productions](#), featuring the [Heavitree Squilometre](#) update!

IN THIS MONTH'S ISSUE:-

■ **Wow, thank you so much South Lawn Terrace - we've had a blast!**

- Fabulous feedback
- Great new friends made.

■ **Park in the Dark**

- Extended sign up deadline.

■ **More news from our Heavitree Gap (Ntaripe) friends**

- A Steiner story.
- Landscape performance.

■ **"Heavitree Book of Tells"**

- Building an archive of everything we've learned.

■ **Exciting plans for next year - The Quarry Trails!!!**

- Linking Heavitree with the City!



■ Wow, thank you so much South Lawn Terrace - we've had a blast!

- Fabulous feedback – We can't express enough how wonderful it is to see familiar faces on our tours. We feel that we've made real friends. Judy Robins from the Friends of Higher Cemetery, Barbara Farrell from the Heavitree Community Association, Sally Robinson of the Heavitree Local History Society and so many other friends who have been now on every tour. You know who you are! It's a real thrill to see you. 😊

Here's what our audiences had to say:-



"Very enjoyable and informative! (As always)"

"Great fun, thank you. Interesting, especially to discover brickworks site."

"What a lovely event. This should definitely be opened up for school trips also. I grew up in Heavitree and there was so much that I learnt. Thank you so so much."

"Brilliant! Really enjoyed the walk and learnt a lot about the history of South Lawn Terrace. Thank you very much. Look forward to the next one"

"Really lovely afternoon event. Great actress - very charming. Lots of fab information. Looking forward to the next one."

"Another lovely production. Very enjoyable. Thank you so much for showing us the rich history around us."

"Absolutely brilliant! Really well done; really interesting. So much I didn't know. Thank you!"

"Excellent - so interesting and beautifully presented".

"It was brilliant! I saw places I never knew existed and I've lived in the area for 30 years! Thank you so much"

- Some great new friends made

We made some great new friends too.

It was good to see Cllr Rosie Denham come along to support this local community initiative. And the good news is that she passed the clean hand test and didn't have to stand in the Victorian naughty line!

Huge thanks go to the incredibly talented **Lindsey Hughes** who tackled the "interweaving" of all of your stories for this piece and performed superbly. It was the first time we'd worked with Linny, a Heavitree-based artist, and we certainly hope it won't be the last. We think she's amazing!



■ Park in the Dark

We've moved the sign up deadline to 27th July – don't miss this amazing youth performance opportunity!

Great youth performance opportunity!!!

If you're 14-18 (or close to it) and use the Heavitree Pleasure Grounds then sign up here – we're calling you!!

Be part of THE PARK IN THE DARK – Urban Performance

WE'RE RECRUITING NOW!!!!

Please contact us to sign up by 30th JUNE 2016
<http://interwovenproductions.jojo-spinks.com/park-in-the-dark.html> or
interwoven@jojo-spinks.com or
07855 935137



Part of the Heavitree Sculpture project

BREAKDANCE

VOCAL ARTS

PHYSICAL THEATRE

We're offering a series of professional workshops and the chance to create your own urban performance in the Park. This is funded by Exeter City Council - so no cost to you. Plus ... first-hand careers advice from the artists who know. Workshops will be held on Wednesday evenings, 5.00-7.00 p.m., at the Scout Hut, South Lawn Terrace or on location in Heavitree Pleasure Grounds – ALL THROUGH AUGUST.

The performance will then be devised and created in September for weekend performances in October 2016.

■ More news from our Heavitree Gap (Ntaripe) friends

We've had two lovely communications recently from our friends in Alice Springs

- A Steiner story – *kids with "good spirits"*

We loved this recent email from Bushschool co-ordinator, Dan Murphy about how the Custodians have been working with a local Steiner School "[showing the kids a different way of looking at the country](#)". You can see the full story, [here](#).

- Landscape performance



Dan also shared this link to their recent [NAIDOC](#) event (follow this [link](#) – you can see Dan kneeling up in the beanie hat!).

We have so much to learn about allowing landscape (or as Dan describes it "country") to tell us its own story.

But we think we're on the right track and feel very blessed by this global connection.

NAIDOC event, Alice Springs – Wild Dog Story
Photo from <http://www.alicespringsnews.com.au/>

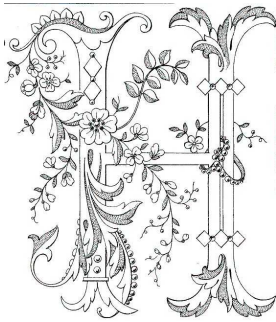
Theatre Locale is produced by Jojo Spinks and [Interwoven Productions](#)

To unsubscribe at any time please just return the email with "unsubscribe" in the subject line.

Email: interwoven@jojo-spinks.com Tel: 07855 935137

■ “Heavitree Book of Tells”

- Building an archive of everything we've learned.



As we continue working we're gathering huge amounts of historical detail, stories, memories, images and maps relating to Heavitree and we'd love to bring it all together in an archive so that people can easily access it.

The obvious choice is to create a searchable, online archive but it isn't the only option of course. We're going to be starting talks with the Heavitree Local History Society and with the Devon Records Office soon to start planning this but if you have any ideas at all, or archiving/internet skills to offer, then we'd love to hear from you.

■ Exciting plans for next year - Heavitree Quarry Trails!!!

- Linking Heavitree with the City!

Well, the voting has been dynamic and we'll keep totting it up but one choice has been top of the voting all year so it's time to announce your Top Heavitree Site for next year - **“Heavitree Quarries – Ancient rocks and sacred places”**.

Did you know that stone quarried in Heavitree turns up in the City Wall, the Castle, the Underground Passages, a myriad of small Mediaeval chapels and dozens of linking walls and buildings all over the City?



Heavitree Quarry – Coates Road



Heavitree Stone

We'd like to celebrate that fact by designing a series of creative trails from Heavitree to the City and back again.

It's early days though so if you'd like to be involved in those discussions then now's the time to get in touch!



St Pancras Church, city centre